



# CTA-063-Trash in the Ocean-World's Oceans

Join us to save coral reefs

Vic Ferguson

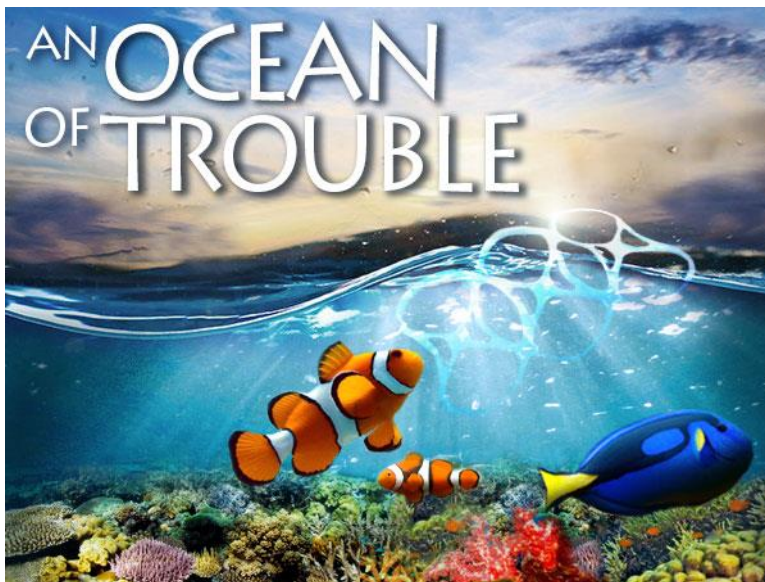
The World Federation for Coral Reef Conservation 281.971.7703 P.O. Box 311117 Houston Texas 77231  
7/11/17

## NEWS

### As in 'Finding Dory', here's why real sea-creatures swimming the Pacific Ocean face challenges

June 22, 2016

Updated June 23, 2016 12:01 p.m.STAFF

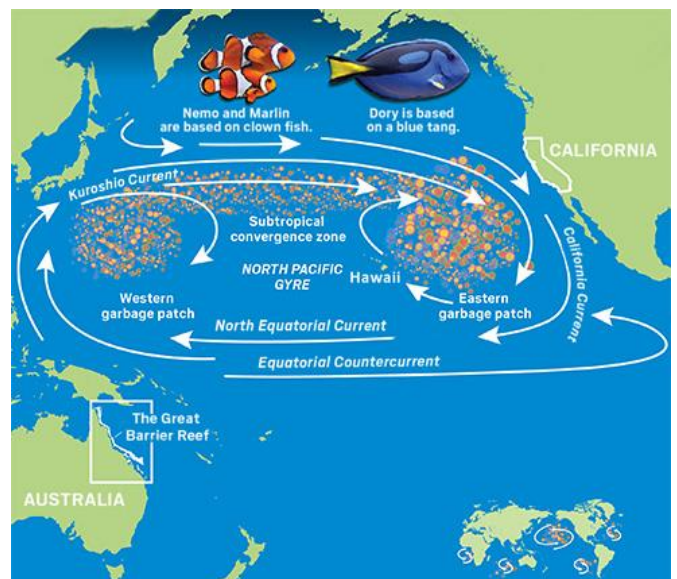


BY ANNA BERKEN /  
STAFF [FACEBOOK](#)

In the new Pixar movie “Finding Dory,” the main characters, Dory, Marlin and Nemo, swim from the Great Barrier Reef in Australia to California. We take a look at some of the challenges these creatures would face in a real-life trek across the Pacific Ocean.

## PLASTIC POLLUTION IN THE WATER

The garbage patches above are areas where bits of floating trash are concentrated by ocean currents. The plastic breaks up into little pieces and forms a soup of debris.





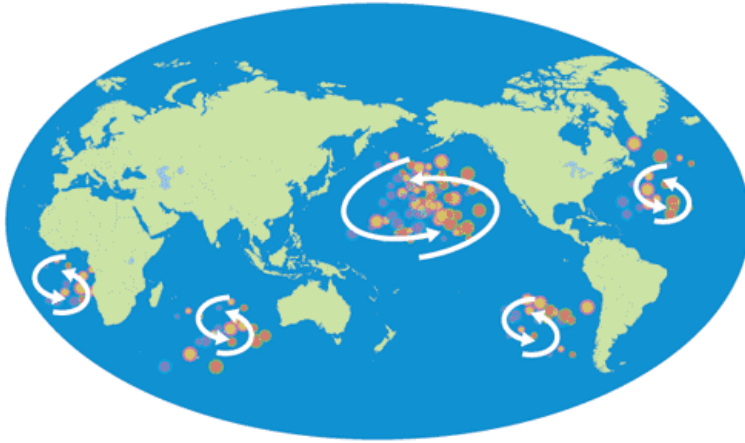
# CTA-063-Trash in the Ocean-World's Oceans

Join us to save coral reefs

Vic Ferguson

The World Federation for Coral Reef Conservation 281.971.7703 P.O. Box 311117 Houston Texas 77231

## Gyres around the world

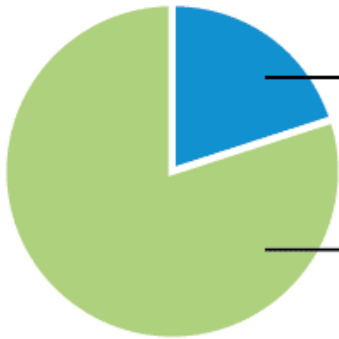


There are five known gyres collecting garbage in the oceans.

### 9 million tons

Plastic waste that goes into the ocean every year

## Sources of debris Plastic degradation



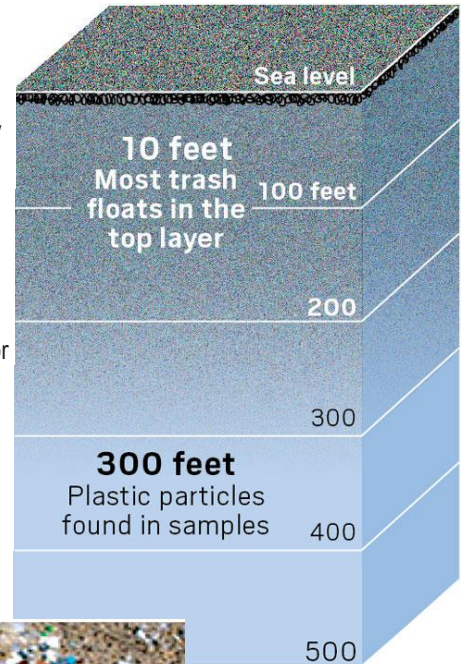
**20%**

From ships or ocean sources

**80%**

From land via rivers or sewers

Plastic does not fully decompose, but breaks down into smaller and smaller pieces. It can take hundreds of years for plastic objects to degrade.





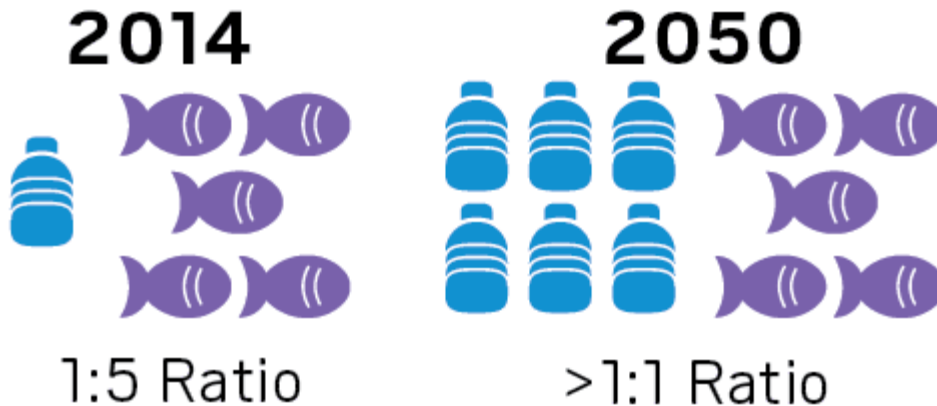
# CTA-063-Trash in the Ocean-World's Oceans

[Join us to save coral reefs](#)

**Vic Ferguson**

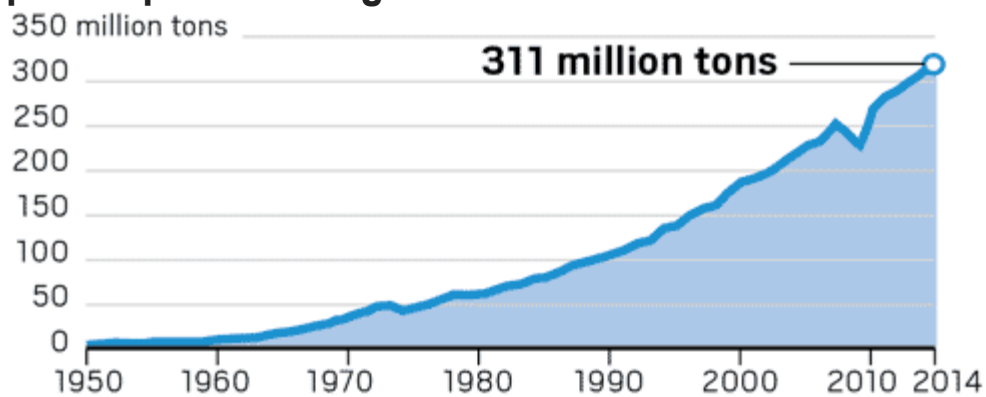
The World Federation for Coral Reef Conservation 281.971.7703 P.O. Box 311117 Houston Texas 77231

Plastic will outweigh fish in the ocean by 2050  
It currently (2016) "Equals" the weight of fish in the ocean



A recent study found that if we continue our current rate of plastic use, the waste will soon outweigh fish.

## Global plastic production growth



## Common plastics found in marine debris

Water and soda bottles

Fishing line

Bags

Fishing nets

Food packaging

Bouys and traps



## CTA-063-Trash in the Ocean-World's Oceans

[Join us to save coral reefs](#)

**Vic Ferguson**

*The World Federation for Coral Reef Conservation 281.971.7703 P.O. Box 311117 Houston Texas 77231*

Eating utensils

Plastic sheeting

Cigarette butts

Industrial pellets

Drinking straws/stirrers

Pipes for plumbing

Polyester clothing

Detergent bottles

Microbeads

Foam containers

Microfibers

Balloons

These objects are often mistaken for food and consumed by albatrosses and other animals. Marine life can also get tangled in discarded fishing gear.





# CTA-063-Trash in the Ocean-World's Oceans

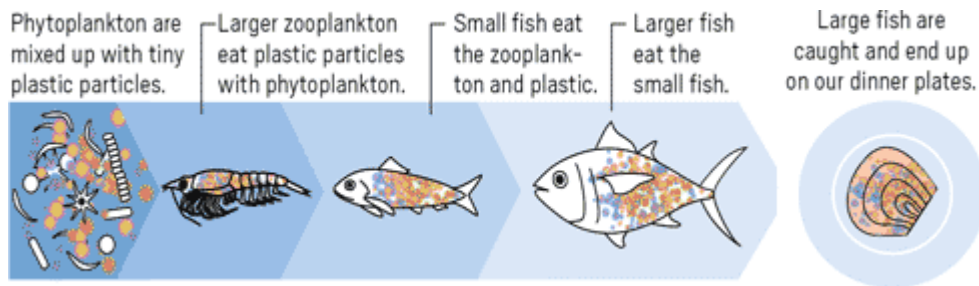
Join us to save coral reefs

Vic Ferguson

The World Federation for Coral Reef Conservation 281.971.7703 P.O. Box 311117 Houston Texas 77231

## Plastic in the food chain

A sampling of ocean fish found one-third had plastic fragments in their digestive tract.

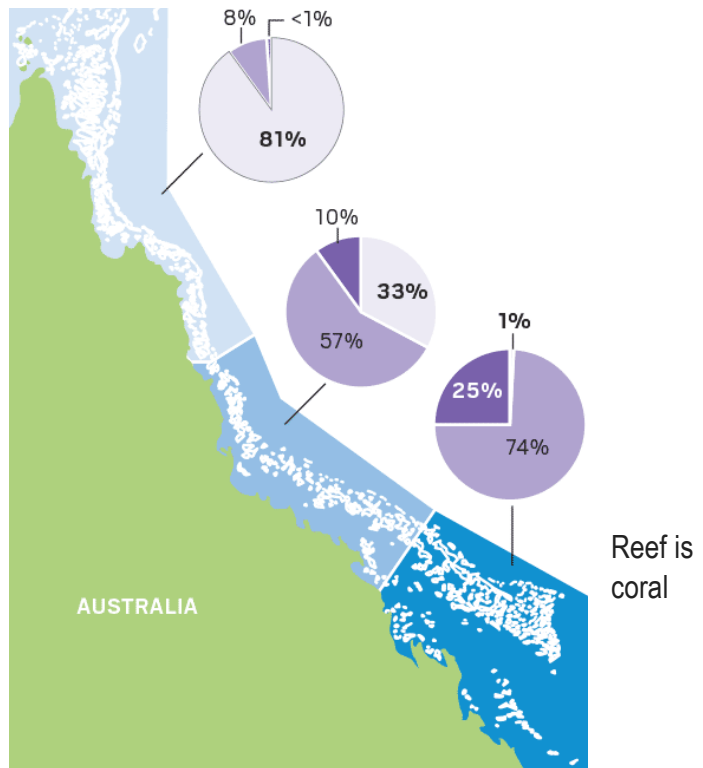


## CLIMATE CHANGE AND GREAT BARRIER REEF-GBR

### Coral health

- Severely bleached
- Somewhat bleached
- Not bleached

The coral that makes up the Great Barrier Reef is in crisis. Rising water temperatures lead to bleaching and collapse of the ecosystem.





# CTA-063-Trash in the Ocean-World's Oceans

[Join us to save coral reefs](#)

**Vic Ferguson**

*The World Federation for Coral Reef Conservation 281.971.7703 P.O. Box 311117 Houston Texas 77231*

Australian Prime Minister Malcolm Turnbull recently promised \$1 billion toward efforts to save the reef if re-elected.

## GREAT BARRIER REEF

» BEFORE BLEACHING | [AFTER BLEACHING](#)





# CTA-063-Trash in the Ocean-World's Oceans

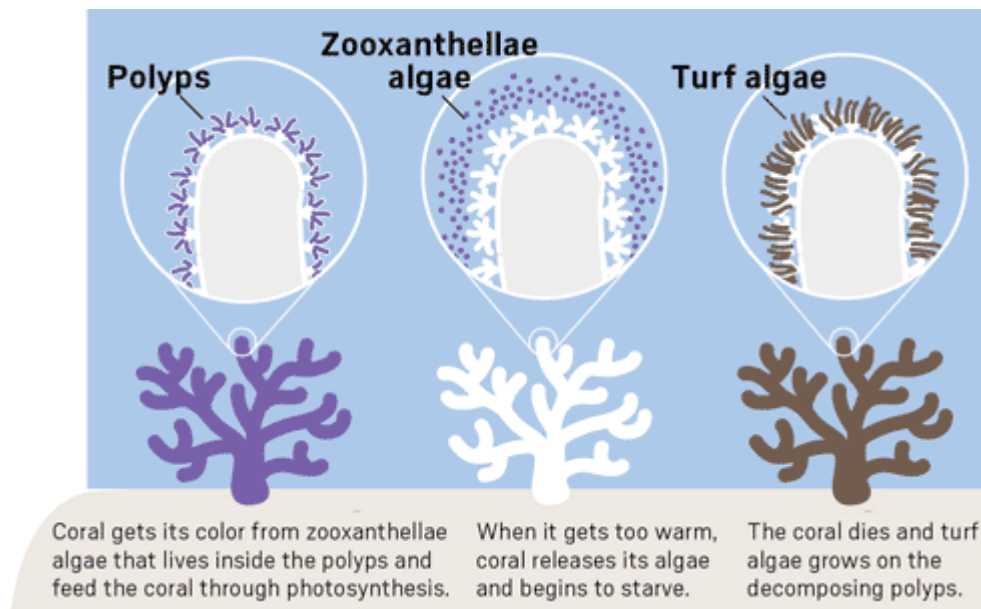
[Join us to save coral reefs](#)

**Vic Ferguson**

The World Federation for Coral Reef Conservation 281.971.7703 P.O. Box 311117 Houston Texas 77231

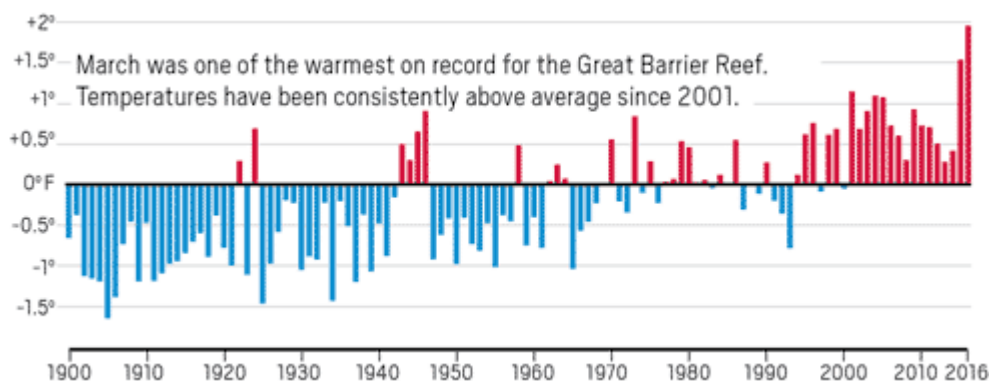
## Coral bleaching

Coral is made up of tiny polyps living in colonies. When stressed, coral begins to starve and die. Coral covers 0.01% of the ocean floor but provides habitat for more than 25 percent of marine species.



## Ocean temperature rising

March was one of the warmest on record for the Great Barrier Reef. Temperatures have been consistently above average since 2001.





## CTA-063-Trash in the Ocean-World's Oceans

[Join us to save coral reefs](#)

**Vic Ferguson**

---

*The World Federation for Coral Reef Conservation 281.971.7703 P.O. Box 311117 Houston Texas 77231*

Sources: NOAA, California Coastal Commission, Ocean Conservancy, Arc Centre of Excellence, Australian Bureau of Meteorology, Science Magazine, Algalita Marine Research Foundation, Sun Sentinel, World Economic Forum

*Vic Ferguson  
The World Federation for Coral Reef Conservation  
Executive Director  
P.O. Box 311117  
Houston, Texas 77231  
vic.ferguson@wfcrc.org  
www.wfcrc.org  
281.971.7703 (office)  
512.986.1902 (cell)*

*The only thing necessary for the triumph of evil is that good men do nothing" ....**Edmund Burke***